

Power Tools

Tool Accessories

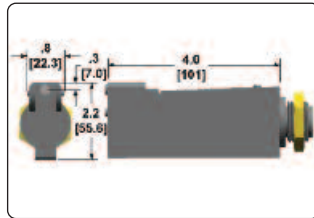
Special Front-End Accessories

Where limited access applications make it impossible to use POP® riveting tools in their standard configurations, a series of specialized setting heads and front end kits are available.

A1 Offset Head

Narrow nose diameter, for setting rivets in tight corners

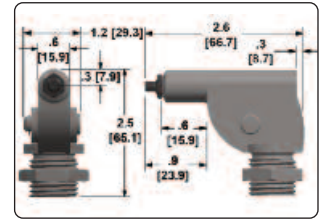
- Head sets rivets within 0.276" (7mm) of a right-angled section
- Recommended for setting POP® rivets up to and including aluminum alloy 3/16" (4.8mm) diameter
- Weight: 1.39lb (0.63 kg)



PRH830 Corner Head

Very compact 90° corner head

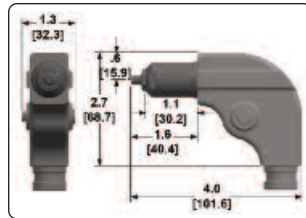
- Designed for extremely restricted access
- Sets all POP® rivets up to and including aluminum alloy 5/32" (4.0mm) diameter
- Weight: 0.68lb (0.31 kg)



PRH840 Corner Head

Robust 90° corner head

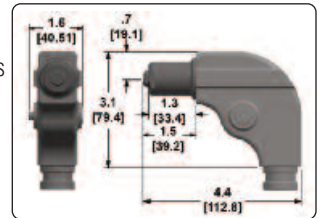
- Suitable for use with wide range of riveting tools
- Recommended for setting POP® rivets up to and including steel 3/16" (4.8mm) diameter
- Weight: 1.1lb (0.5 kg)



PRH850 Heavy Duty Corner Head

Heavy duty 90° corner head

- Designed for high volume usage with higher capacity POP® setting tools
- Sets all POP® rivets up to and including open end 1/4" (6.4mm) diameter
- Weight: 1.68lb (0.76 kg)

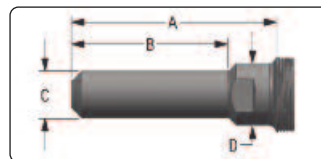


Special Setting Head Kits

Setting Head	Adapter Kits				
Description	ProSet® 1600	ProSet® 2500	ProSet® 3400	510A	540
A1	Not Available	PRH830-2500	–	PRA967	PRA965
PRH830	Not Available	PRH830-2500	–	PRA967	PRA965
PRH840	Not Available	PRH840-2500	PRH840-3400	PRH840-510	PRH840-540
PRH850	Not Available	–	PRH850-3400	–	PRH850-540

Front End Kits

A wide range of front end kits ensures that the POP® setting tool range is able to reliably set rivets even in deep or narrow access applications.



Quick disconnect
Reduced diameter version

Tool Series	Part Number	A		B		C		D	
		in	(mm)	in	(mm)	in	(mm)	in	(mm)
ProSet® 1600	FAN239-174	5.12	130.0	3.78	96.0	0.68	17.3	1.10	28.0
ProSet® 2500	FAN275-132	5.49	139.5	3.78	96.0	0.81	20.6	1.26	32.0
	FAN275-198 (up to 5/32")	5.30	134.5	2.17	55.0	0.68	17.3	1.26	32.0
	FAN275-229 (3/16" Al-St)	5.30	134.5	2.17	55.0	0.68	17.3	1.26	32.0
ProSet® 3400	FAN276-075	7.87	200.0	6.10	155.0	0.88	22.4	1.50	38.0
510A	PRG511-003 (std. set up on 511A)	4.09	103.9	3.00	76.2	0.68	17.4	0.88	22.2
5250A	PRG5201-001 (std. set up on 5251A)	3.38	85.7	1.86	47.1	0.68	17.4	0.90	22.9
540	PRG541-001 (std. set up on 541)	5.60	142.1	3.55	90.1	0.90	22.8	1.25	31.8