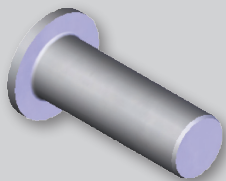


CA HEAVY DUTY RIVET NUT FLAT HEAD SERIES

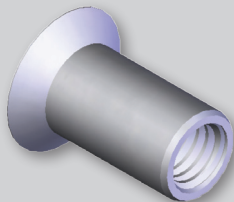
CA SERIES



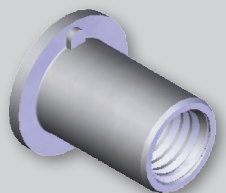
- The CA series offers a thick head and thick collapse chamber wall thickness for heavy duty applications.
- Available with a countersunk head style for a flush installation.
- Available in a keyed head style for resistance spin out.



CLOSED END

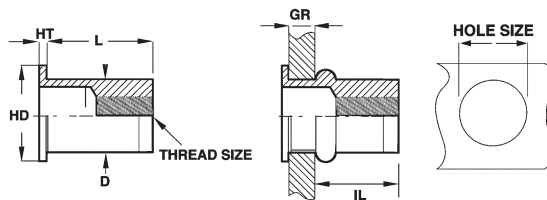


COUNTERSUNK HEAD



KEYED HEAD

Sherex manufactures
NAS 1329 and NAS
1330 style Rivet Nuts.
See page 35 for details.



UNIFIED THREAD (UNIT - INCHES)

Part Number (Steel)	Thread Size	Grip Range		L ± .015	HD ± .015	HT Nom.	D +.000/-.004	IL Ref.	Hole Size
		Min.	Max.						
CA-0440S-060	4-40 UNC	.010	.060	.345	.270	.025	.155	.230	.155-.157
CA-0440S-085	4-40 UNC	.060	.085	.370	.270	.025	.155	.230	.155-.157
CA-0440S-110	4-40 UNC	.085	.100	.400	.270	.025	.155	.230	.155-.157
CA-0632S-075	6-32 UNC	.010	.075	.438	.325	.032	.189	.300	.189-.193
CA-0632S-120	6-32 UNC	.075	.120	.500	.325	.032	.189	.315	.189-.193
CA-0632S-160	6-32 UNC	.120	.160	.500	.325	.032	.189	.270	.189-.193
CA-0832S-075	8-32 UNC	.010	.075	.438	.357	.032	.221	.300	.221-.226
CA-0832S-120	8-32 UNC	.075	.120	.500	.357	.032	.221	.315	.221-.226
CA-0832S-160	8-32 UNC	.120	.160	.500	.357	.032	.221	.270	.221-.226
CA-1024S-080	10-24 UNC	.010	.080	.531	.406	.038	.250	.380	.250-.256
CA-1024S-130	10-24 UNC	.080	.130	.594	.406	.038	.250	.390	.250-.256
CA-1024S-180	10-24 UNC	.130	.180	.641	.406	.038	.250	.390	.250-.256
CA-1032S-080	10-32 UNF	.010	.080	.531	.406	.038	.250	.380	.250-.256
CA-1032S-130	10-32 UNF	.080	.130	.594	.406	.038	.250	.390	.250-.256
CA-1032S-180	10-32 UNF	.130	.180	.641	.406	.038	.250	.390	.250-.256
CA-2520S-080	1/4-20 UNC	.020	.080	.625	.475	.058	.332	.450	.332-.338
CA-2520S-140	1/4-20 UNC	.080	.140	.687	.475	.058	.332	.450	.332-.338
CA-2520S-200	1/4-20 UNC	.140	.200	.750	.475	.058	.332	.450	.332-.338
CA-3118S-125	5/16-18 UNC	.030	.125	.750	.665	.062	.413	.505	.413-.423
CA-3118S-200	5/16-18 UNC	.125	.200	.875	.665	.062	.413	.555	.413-.423
CA-3118S-275	5/16-18 UNC	.200	.275	.937	.655	.062	.413	.540	.413-.423
CA-3716S-115	3/8-16 UNC	.030	.115	.844	.781	.088	.490	.585	.490-.500
CA-3716S-200	3/8-16 UNC	.115	.200	.938	.781	.088	.490	.595	.490-.500
CA-3716S-285	3/8-16 UNC	.200	.285	1.031	.781	.088	.490	.605	.490-.500
CA-5013S-150	1/2-13 UNC	.050	.150	.906	.906	.085	.625	.605	.625-.635
CA-5013S-250	1/2-13 UNC	.150	.250	1.031	.906	.085	.625	.630	.625-.635
CA-5013S-350	1/2-13 UNC	.250	.350	1.141	.906	.085	.625	.640	.625-.635

PART NUMBERING SYSTEM

CA Specifications

Material:

Steel 1008/1010/1110
Non-Magnetic Stainless Steel 302
Stainless Steel 430
Aluminum 5056/6053

RoHS Compliant Finish:

Zinc Plated-Clear Trivalent Chromate
per Sherex SFS-01-001

Part Number

Example: CA-2520S-080

CA	2520	Material	()	080
Product Style	Thread Size	S-Steel	Empty-Open End	Grip Range
Heavy Duty		A-Aluminum	B-Closed End	
Large Flange		SS-Stainless Steel 430	T-Clear Trivalent	
Smooth Shank		NM-Stainless Steel 302		
		NM318-Satinless Steel 316		

Special finish or material available upon request

Grip range can be affected by parent material and hole size. Sherex recommends trial installations to determine the proper grip range for the application.

Contact Sherex for details.

CA style rivet nuts are available in closed end, keyed, and countersunk head designs. Other specials available upon request.

Contact Sherex for test data.

INSTALLATION TOOLING

CA Series can be installed with our Hand Tools, and Hydro-Pneumatic Tools.

For additional tooling information see pages 41-45.

Sherex rivet nuts are compatible with the following hardware:

GRADE 2, GRADE 5, CLASS 8.8 and CLASS 9.8

Please contact Sherex when using other grade fasteners.