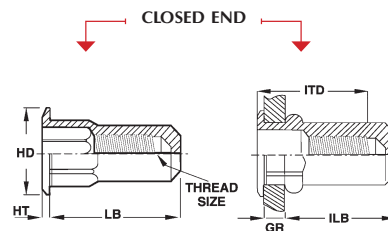
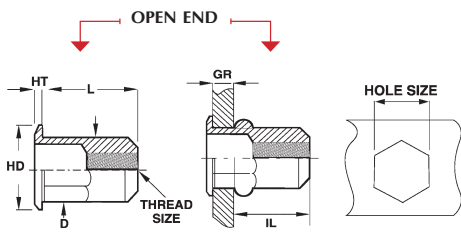


CAH HALF HEX BODY LARGE FLANGE THIN WALL SERIES



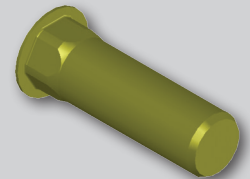
**CAH
SERIES**

UNIFIED THREAD (UNIT - INCHES)

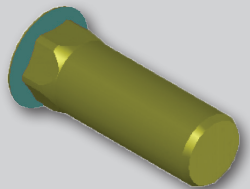
Part Number (Steel)	Thread Size	Grip Range		L ± .015	HD ±.010 ±.025*	HT ± .003	D (A/F) Max.	IL Max.	LB ± .015	ILB Max.	ITD Ref.	Hole Size (A/F) +.004/-0.000
		Min.	Max.									
CAH2-0632-080	6-32 UNC	.020	.080	.385	.375	.027	.249	.295	.740	.640	.575	.250
CAH2-0632-130	6-32 UNC	.080	.130	.435	.375	.027	.249	.295	.740	.580	.640	.250
CAH2-0832-080	8-32 UNC	.020	.080	.385	.375	.027	.249	.295	.740	.640	.575	.250
CAH2-0832-130	8-32 UNC	.080	.130	.435	.375	.027	.249	.295	.740	.580	.640	.250
CAH2-1024-130	10-24 UNC	.020	.130	.435	.390	.027	.280	.275	1.030	.845	.695	.281
CAH2-1024-225	10-24 UNC	.130	.225	.535	.390	.027	.280	.275	1.030	.735	.805	.281
CAH2-1032-130	10-32 UNF	.020	.130	.435	.390	.027	.280	.275	1.030	.845	.695	.281
CAH2-1032-225	10-32 UNF	.130	.225	.535	.390	.027	.280	.275	1.030	.735	.805	.281
CAH2-2520-165	1/4-20 UNC	.027	.165	.585	.510	.030	.374	.400	1.190	1.015	.945	.375
CAH2-2520-260	1/4-20 UNC	.165	.260	.685	.510	.030	.374	.400	1.190	.915	1.085	.375
CAH2-2528-165	1/4-28 UNF	.027	.165	.585	.510	.030	.374	.400	1.190	1.015	.945	.375
CAH2-2528-260	1/4-28 UNF	.165	.260	.685	.510	.030	.374	.400	1.190	.915	1.085	.375
CAH2-3118-150	5/16-18 UNC	.027	.150	.685	.655*	.035	.499	.530	1.445	1.235	1.045	.500
CAH2-3118-312	5/16-18 UNC	.150	.312	.845	.655*	.035	.499	.515	1.445	1.220	1.170	.500
CAH2-3124-150	5/16-24 UNF	.027	.150	.685	.655*	.035	.499	.530	1.445	1.235	1.045	.500
CAH2-3124-312	5/16-24 UNF	.150	.312	.845	.655*	.035	.499	.515	1.445	1.220	1.170	.500
CAH2-3716-150	3/8-16 UNC	.027	.150	.685	.655*	.035	.499	.530	1.445	1.235	1.045	.500
CAH2-3716-312	3/8-16 UNC	.150	.312	.845	.655*	.035	.499	.515	1.445	1.220	1.170	.500
CAH2-3724-150	3/8-24 UNF	.027	.150	.685	.655*	.035	.499	.530	1.445	1.235	1.045	.500
CAH2-3724-312	3/8-24 UNF	.150	.312	.845	.655*	.035	.499	.515	1.445	1.220	1.170	.500



- The CAH series offers a semi hex body for excellent resistance to spin out in the hole.



CLOSED END



SEALED HEAD

METRIC THREAD (UNIT - MILLIMETERS)

Part Number (Steel)	Thread Size	Grip Range		L ± .38	HD ±.25 ±.64*	HT ± .08	D (A/F) Max.	IL Max.	LB ± .38	ILB Max.	ITD Ref.	Hole Size (A/F) +.10/-0.000
		Min.	Max.									
CAH2-470-2.0	M4x0.7 ISO	0.50	2.00	9.78	9.53	0.68	6.35	7.49	18.80	16.26	14.61	6.35
CAH2-470-3.3	M4x0.7 ISO	2.00	3.30	11.05	9.53	0.68	6.35	7.49	18.80	14.73	16.26	6.35
CAH2-580-3.3	M5x0.8 ISO	0.50	3.30	11.05	9.91	0.68	7.10	6.99	26.16	21.46	17.65	7.14
CAH2-580-5.7	M5x0.8 ISO	3.30	5.70	13.59	9.91	0.68	7.10	6.99	26.16	18.67	20.45	7.14
CAH2-610-4.2	M6x1.0 ISO	0.70	4.20	14.86	12.96	0.76	9.50	10.16	30.23	25.78	24.00	9.53
CAH2-610-6.6	M6x1.0 ISO	4.20	6.60	17.40	12.96	0.76	9.50	10.16	30.23	23.24	27.56	9.53
CAH2-8125-3.8	M8x1.25 ISO	0.70	3.80	17.40	16.64*	0.89	12.70	13.46	36.70	31.37	26.54	12.70
CAH2-8125-7.9	M8x1.25 ISO	3.80	7.90	21.46	16.64*	0.89	12.70	13.08	36.70	30.99	29.72	12.70
CAH2-1015-3.8	M10x1.5 ISO	0.70	3.80	17.40	16.64*	0.89	12.70	13.46	36.70	31.37	26.54	12.70
CAH2-1015-7.9	M10x1.5 ISO	3.80	7.90	21.46	16.64*	0.89	12.70	13.08	36.70	30.99	29.72	12.70

PART NUMBERING SYSTEM

CAH Specifications

Material:

Steel 1008/1010
Stainless Steel 302*
Aluminum 5056

RoHS Compliant Finishes:

Zinc Plated-Yellow Trivalent Chromate
per Sherex SFS-01-001, SC2
Zinc Plated-Clear Trivalent Chromate
per Sherex SFS-01-001

Part Number

Example: CAH2-2520-165

CAH	2	2520	165	()
Product Style	Material	Thread Size	Grip Range	Empty-Open End
Semi Hex	1-Stainless Steel			B-Closed End
Thin Wall Series	2-Steel			T-Clear Trivalent
	3-Aluminum			

Special finish or material available upon request

*Contact Sherex for exact product dimensions in Stainless Steel.

Grip range can be affected by parent material and hole size. Sherex recommends trial installations to determine the proper grip range for the application.

Contact Sherex for details.

CAH style rivet nuts are available in sealed head and closed end designs. Other specials available upon request.

Contact Sherex for test data.

INSTALLATION TOOLING

CAH Series can be installed with our Hand Tools, Pneumatic Tools, and Hydro-Pneumatic Tools.

For additional tooling information see pages 41-45.

Sherex rivet nuts are compatible with the following hardware:

GRADE 2, GRADE 5, CLASS 8.8 and CLASS 9.8

Please contact Sherex when using other grade fasteners.