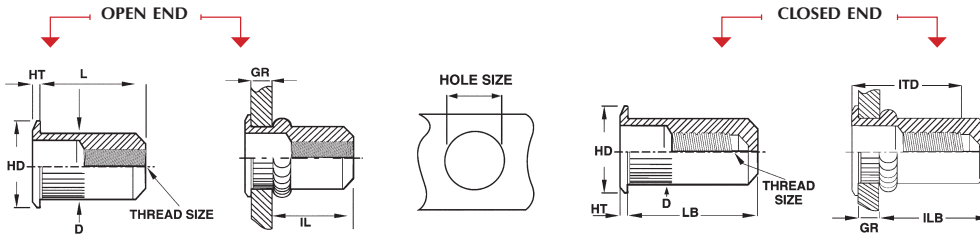


CAL LARGE FLANGE KNURLED BODY THIN WALL SERIES



CAL SERIES



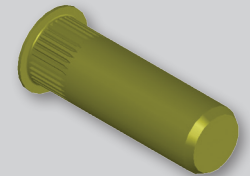
UNIFIED THREAD (UNIT - INCHES)

Part Number (Steel)	Thread Size	Grip Range		L	HD	HT	D	IL	LB	ILB	ITD	Hole Size
		Min.	Max.									
CAL2-0632-080	6-32 UNC	.020	.080	.420	.390	.030	.265	.305	.740	.640	.610	+.006/-.000
CAL2-0632-130	6-32 UNC	.080	.130	.470	.390	.030	.265	.305	.740	.580	.670	.266
CAL2-0832-080	8-32 UNC	.020	.080	.420	.390	.030	.265	.305	.740	.640	.610	.266
CAL2-0832-130	8-32 UNC	.080	.130	.470	.390	.030	.265	.305	.740	.580	.670	.266
CAL2-1024-130	10-24 UNC	.020	.130	.475	.415	.030	.296	.315	.990	.845	.730	.297
CAL2-1024-225	10-24 UNC	.130	.225	.585	.415	.030	.296	.315	.990	.735	.840	.297
CAL2-1032-130	10-32 UNF	.020	.130	.475	.415	.030	.296	.315	.990	.845	.730	.297
CAL2-1032-225	10-32 UNF	.130	.225	.585	.415	.030	.296	.315	.990	.735	.840	.297
CAL2-2520-165	1/4-20 UNC	.027	.165	.580	.500	.030	.390	.380	1.190	1.005	.895	.391
CAL2-2520-260	1/4-20 UNC	.165	.260	.680	.500	.030	.390	.380	1.190	.905	1.035	.391
CAL2-2528-165	1/4-28 UNF	.027	.165	.580	.500	.030	.390	.380	1.190	1.005	.895	.391
CAL2-2528-260	1/4-28 UNF	.165	.260	.680	.500	.030	.390	.380	1.190	.905	1.035	.391
CAL2-3118-150	5/16-18 UNC	.027	.150	.690	.685*	.035	.530	.470	1.390	1.175	.995	.531
CAL2-3118-312	5/16-18 UNC	.150	.312	.805	.685*	.035	.530	.425	1.390	1.025	1.120	.531
CAL2-3124-150	5/16-24 UNF	.027	.150	.690	.685*	.035	.530	.470	1.390	1.175	.995	.531
CAL2-3124-312	5/16-24 UNF	.150	.312	.805	.685*	.035	.530	.425	1.390	1.025	1.120	.531
CAL2-3716-150	3/8-16 UNC	.027	.150	.690	.685*	.035	.530	.470	1.390	1.175	.995	.531
CAL2-3716-312	3/8-16 UNC	.150	.312	.805	.685*	.035	.530	.425	1.390	1.025	1.120	.531
CAL2-3724-150	3/8-24 UNF	.027	.150	.690	.685*	.035	.530	.470	1.390	1.175	.995	.531
CAL2-3724-312	3/8-24 UNF	.150	.312	.805	.685*	.035	.530	.425	1.390	1.025	1.120	.531
CAL2-5013-200	1/2-13 UNC	.063	.200	1.150	.865*	.047	.685	.850	2.365	2.070	1.505	.688
CAL2-5013-350	1/2-13 UNC	.200	.350	1.300	.865*	.047	.685	.850	2.365	1.920	1.505	.688

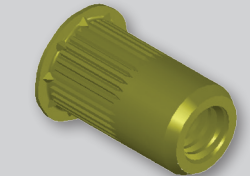
- The CAL series has a large flange to provide increased strength in punched and drilled holes.
- Knurled body provides a higher resistance to spin out when installed in soft materials.

METRIC THREAD (UNIT - MILLIMETERS)

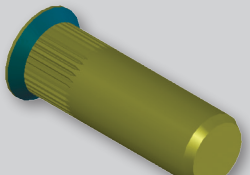
Part Number (Steel)	Thread Size	Grip Range		L	HD	HT	D	IL	LB	ILB	ITD	Hole Size
		Min.	Max.									
CAL2-470-2.0	M4x0.7 ISO	0.50	2.00	10.68	9.91	0.76	6.73	7.75	18.80	16.26	15.49	6.75
CAL2-470-3.3	M4x0.7 ISO	2.00	3.30	11.94	9.91	0.76	6.73	7.75	18.80	14.73	17.02	6.75
CAL2-580-3.3	M5x0.8 ISO	0.50	3.30	12.07	10.54	0.76	7.52	8.00	25.15	21.46	18.54	7.60
CAL2-580-5.7	M5x0.8 ISO	3.30	5.70	14.86	10.54	0.76	7.52	8.00	25.15	18.67	21.34	7.60
CAL2-610-4.2	M6x1.0 ISO	0.70	4.20	14.73	12.70	0.76	9.91	9.65	30.23	25.53	22.73	10.00
CAL2-610-6.6	M6x1.0 ISO	4.20	6.60	17.27	12.70	0.76	9.91	9.65	30.23	22.99	26.29	10.00
CAL2-8125-3.8	M8x1.25 ISO	0.70	3.80	17.53	17.40*	0.89	13.46	11.94	35.31	29.85	25.27	13.50
CAL2-8125-7.9	M8x1.25 ISO	3.80	7.90	20.45	17.40*	0.89	13.46	10.80	35.31	26.04	28.45	13.50
CAL2-1015-3.8	M10x1.5 ISO	0.70	3.80	17.53	17.40*	0.89	13.46	11.94	35.31	29.85	25.27	13.50
CAL2-1015-7.9	M10x1.5 ISO	3.80	7.90	20.45	17.40*	0.89	13.46	10.80	35.31	26.04	28.45	13.50
CAL2-12175-5.1	M12x1.75 ISO	1.60	5.10	29.21	21.97*	1.19	17.40	21.59	60.07	52.58	38.23	17.45
CAL2-12175-8.9	M12x1.75 ISO	5.10	8.90	33.02	21.97*	1.19	17.40	21.59	60.07	48.77	38.23	17.45



CLOSED END



WEDGE HEAD



SEALED HEAD

PART NUMBERING SYSTEM

CAL Specifications

Material:
Steel 1008/1010
Stainless Steel 302*
Aluminum 5056

RoHS Compliant Finishes:

Zinc Plated-Yellow Trivalent Chromate per Sherex SFS-01-001, SC2
Zinc Plated-Clear Trivalent Chromate per Sherex SFS-01-001

Part Number

Example: CAL2-2520-165

CAL	2	2520	165	()
Product Style	Material	Thread Size	Grip Range	Empty-Open End
Large Flange	1-Stainless Steel			B-Closed End
Knurled Body	2-Steel			T-Clear Trivalent
Thin Wall Series	3-Aluminum			W-Wedge Head
				S-Sealed

Special finish or material available upon request

*Contact Sherex for exact product dimensions in Stainless Steel.

Grip range can be affected by parent material and hole size. Sherex recommends trial installations to determine the proper grip range for the application. Contact Sherex for details.

CAL style rivet nuts are available in sealed, closed end, and wedge head designs by special order. Other specials available upon request. Contact Sherex for test data.

INSTALLATION TOOLING

CAL Series can be installed with our Hand Tools, Pneumatic Tools, and Hydro-Pneumatic Tools. For additional tooling information see pages 41-45.

Sherex rivet nuts are compatible with the following hardware:

GRADE 2, GRADE 5, CLASS 8.8 and CLASS 9.8

Please contact Sherex when using other grade fasteners.