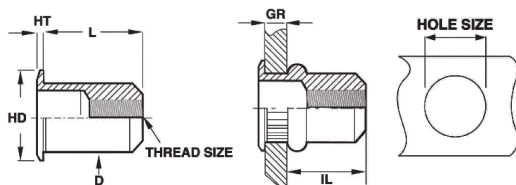


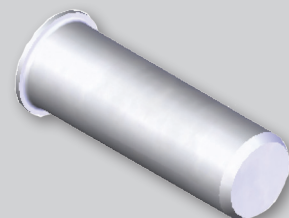
CAO SMALL FLANGE SMOOTH BODY THIN WALL SERIES



**CAO
SERIES**



- The CAO series offers body diameters that will fit in common hole sizes.
- The small flange head also allows for near flush installations.



CLOSED END

UNIFIED THREAD (UNIT - INCHES)

Part Number (Steel)	Thread Size	Grip Range		L ± .015	HD ± .010 ±.015*	HT ± .003	D Max.	IL Max.	Hole Size +.006/-.000
		Min.	Max.						
CAO2-0632-080	6-32 UNC	.020	.080	.385	.295	.018	.249	.315	.250
CAO2-0832-080	8-32 UNC	.020	.080	.385	.295	.018	.249	.315	.250
CAO2-1024-130	10-24 UNC	.020	.130	.440	.320	.020	.280	.330	.281
CAO2-1032-130	10-32 UNF	.020	.130	.440	.320	.020	.280	.330	.281
CAO2-2520-165	1/4-20 UNC	.030	.165	.580	.425	.022	.374	.440	.375
CAO2-2528-165	1/4-28 UNF	.030	.165	.580	.425	.022	.374	.440	.375
CAO2-3118-200	5/16-18 UNC	.040	.200	.690	.560*	.022	.499	.540	.500
CAO2-3124-200	5/16-24 UNF	.040	.200	.690	.560*	.022	.499	.540	.500
CAO2-3716-200	3/8-16 UNC	.040	.200	.690	.560*	.022	.499	.540	.500
CAO2-3724-200	3/8-24 UNF	.040	.200	.690	.560*	.022	.499	.540	.500

METRIC THREAD (UNIT - MILLIMETERS)

Part Number (Steel)	Thread Size	Grip Range		L ± .38	HD ± .25 ±.38*	HT ± .08	D Max.	IL Max.	Hole Size +.15/-.000
		Min.	Max.						
CAO2-470-2.0	M4x0.7 ISO	0.50	2.00	9.78	7.49	0.46	6.32	8.00	6.40
CAO2-580-3.3	M5x0.8 ISO	0.50	3.30	11.18	8.13	0.51	7.11	8.38	7.20
CAO2-610-4.2	M6x1.0 ISO	0.76	4.20	14.73	10.80	0.56	9.50	11.18	9.60
CAO2-8125-5.1	M8x1.25 ISO	1.02	5.10	17.53	14.22*	0.56	12.67	13.72	12.70
CAO2-1015-5.1	M10x1.5 ISO	1.02	5.10	17.53	14.22*	0.56	12.67	13.72	12.70

PART NUMBERING SYSTEM

CAO Specifications

Material:

Steel 1008/1010
Aluminum 5056

RoHS Compliant Finishes:

Inch: Zinc Plated-Clear Trivalent Chromate
per Sherex SFS-01-001

Metric: Zinc Plated-Yellow Trivalent Chromate
per Sherex SFS-01-001, SC2

Part Number

Example: CAO2-2520-165

CAO	2	2520	165	()
Product Style	Material	Thread Size	Grip Range	Empty-Open End
Low Profile	2-Steel			B-Closed End
Smooth Shank	3-Aluminum			T-Clear Trivalent
Thin Wall Series				

Special finish or material available upon request

Grip range can be affected by parent material and hole size. Sherex recommends trial installations to determine the proper grip range for the application.
Contact Sherex for details.
Contact Sherex for test data.

INSTALLATION TOOLING

CAO Series can be installed with our Hand Tools, Pneumatic Tools, and Hydro-Pneumatic Tools.
For additional tooling information see pages 41-45.

Sherex rivet nuts are compatible with the following hardware:

GRADE 2, GRADE 5, CLASS 8.8 and CLASS 9.8

Please contact Sherex when using other grade fasteners.