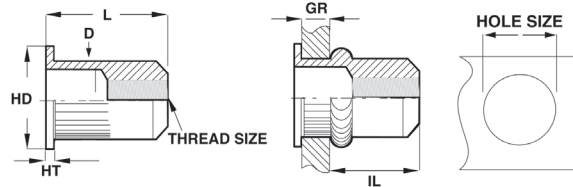


CLM LARGE FLANGE AND CKM SMALL FLANGE

CLM/ CKM SERIES

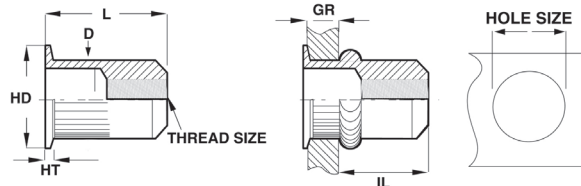


- The CLM series is the metric body version of the CAL series.



CLM METRIC THREAD (UNIT - MILLIMETERS)

Part Number Metric - Steel	Thread Size	Grip Range (E)		L Nom.	HD		HT ±.13	D Max.	IL Ref.	Hole Size +0.10/- .000
		Min.	Max.		Min.	Max.				
CLM2-470-3.0	M4X0.7 ISO	0.25	3.00	11.5	8.62	9.38	0.75	5.95	7.10	6.00
CLM2-580-3.0	M5X0.8 ISO	0.25	3.00	13.0	9.62	10.38	1.00	6.95	7.90	7.00
CLM2-610-3.0	M6X1.0 ISO	0.50	3.00	16.0	12.62	13.38	1.50	8.95	9.40	9.00
CLM2-8125-3.0	M8X1.25 ISO	0.50	3.00	17.5	15.62	16.38	1.50	10.95	11.00	11.00
CLM2-1015-3.5	M10X1.5 ISO	0.50	3.50	22.0	18.12	18.88	2.25	12.95	14.50	13.00



CKM METRIC THREAD (UNIT - MILLIMETERS)

Part Number Metric - Steel	Thread Size	Grip Range (E)		L Nom.	HD		HT ±.13	D Max.	IL Ref.	Hole Size +0.10/- .000
		Min.	Max.		Min.	Max.				
CKM2-470-3.0	M4X0.7 ISO	0.25	3.00	11.3	6.70	7.20	0.46	5.95	7.10	6.00
CKM2-580-3.0	M5X0.8 ISO	0.25	3.00	12.7	7.70	8.20	0.46	6.95	7.90	7.00
CKM2-610-3.0	M6X1.0 ISO	0.50	3.00	15.3	9.70	10.20	0.50	8.95	9.40	9.00
CKM2-8125-3.0	M8X1.25 ISO	0.50	3.00	17.3	11.62	12.38	0.63	10.95	11.00	11.00
CKM2-1015-3.5	M10X1.5 ISO	0.50	3.50	20.4	13.62	14.38	0.80	12.95	14.50	13.00



- The CKM series is the metric body version of the CAK series.

PART NUMBERING SYSTEM

CLM/CKM Specifications

Material:

Steel 1008/1010
Aluminum 5056

RoHS Compliant Finishes:

Zinc Plated-Yellow Trivalent Chromate
per Sherex SFS-01-001, SC2
Zinc Plated-Clear Trivalent Chromate
per Sherex SFS-01-001

Part Number

Example: CLM2-610-3.0

CLM	2	610	3.0	()
Product Style	Material	Thread Size	Grip Range	Empty-Open End
Large Flange	2-Steel			B-Closed End
Knurled Body	3-Aluminum			T-Clear Trivalent
Metric Body				
CKM	2	610	3.0	()
Product Style	Material	Thread Size	Grip Range	Empty-Open End
Small Flange	2-Steel			B-Closed End
Knurled Body	3-Aluminum			T-Clear Trivalent
Metric Body				

Special finish or material available upon request

Grip range can be affected by parent material and hole size. Sherex recommends trial installations to determine the proper grip range for the application. Contact Sherex for details.

CLM & CKM style rivet nut specials available upon request. Contact Sherex for test data.

INSTALLATION TOOLING

CLM/CKM Series can be installed with our Hand Tools, and Hydro-Pneumatic Tools. For additional tooling information see pages 41-45.

Sherex rivet nuts are compatible with the following hardware:

GRADE 2, GRADE 5, CLASS 8.8 and CLASS 9.8

Please contact Sherex when using other grade fasteners.