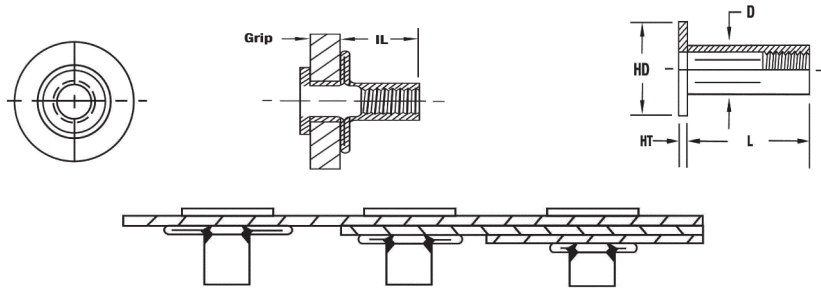


# CPN STRAIGHT SHANK SLOTTED BODY SERIES

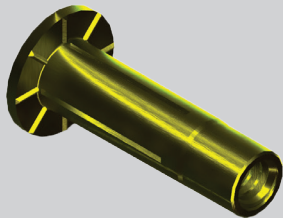
## CPN SERIES



Installs into single, variable, or multiple thickness materials.



- The CPN series offers a large grip range for installation into single, variable or multiple thickness materials.
- Large backside footprint provides increased pull out resistance.
- Designed to be installed in thin plastics without distorting the base material.
- Must be installed with spin-pull installation tooling.



### WEDGE HEAD

## UNIFIED THREAD (UNIT - INCHES)

Part Number (Steel)	Thread Size	Grip Range		HD		L	HT	D	IL	Hole Size
		Min.	Max.	Min.	Max.	± .015	± .005	Max.	Ref.	+ .006/- .000
CPN2-1024-175	10-24 UNC	.020	.175	.490	.510	.781	.038	.272	.425	.273
CPN2-1024-320	10-24 UNC	.175	.320	.490	.510	.921	.038	.272	.425	.273
CPN2-1032-175	10-32 UNF	.020	.175	.490	.510	.781	.038	.272	.425	.273
CPN2-1032-320	10-32 UNF	.175	.320	.490	.510	.921	.038	.272	.425	.273
CPN2-2520-280	1/4-20 UNC	.020	.280	.610	.645	1.000	.059	.346	.505	.347
CPN2-2520-500	1/4-20 UNC	.280	.500	.610	.645	1.234	.059	.346	.505	.347
CPN2-3118-280	5/16-18 UNC	.020	.280	.740	.770	1.141	.062	.437	.570	.438
CPN2-3118-500	5/16-18 UNC	.280	.500	.740	.770	1.375	.062	.437	.570	.438

## METRIC THREAD (UNIT - MILLIMETERS)

Part Number (Steel)	Thread Size	Grip Range		HD		L	HT	D	IL	Hole Size
		Min.	Max.	Min.	Max.	± 0.38	± .13	Max.	Ref.	+ .15/- 0.00
CPN2-580-4.45	M5x0.8 ISO	0.50	4.45	12.45	12.95	21.03	0.96	7.47	9.90	7.48
CPN2-580-8.1	M5x0.8 ISO	4.45	8.10	12.45	12.95	23.80	0.96	7.47	9.90	7.48
CPN2-610-7.1	M6x1.0 ISO	0.50	7.10	15.50	16.38	25.40	1.50	8.79	12.80	8.80
CPN2-610-12.7	M6x1.0 ISO	7.10	12.70	15.50	16.38	31.32	1.50	8.79	12.80	8.80
CPN2-8125-7.1	M8x1.25 ISO	0.50	7.10	18.80	19.65	28.95	1.57	11.10	14.48	11.11
CPN2-8125-12.7	M8x1.25 ISO	7.10	12.70	18.80	19.65	34.90	1.57	11.10	14.48	11.11

## PART NUMBERING SYSTEM

### CPN Specifications

#### Material:

Steel 1008/1010

Aluminum 5056

#### RoHS Compliant Finishes:

Zinc Plated-Yellow Trivalent Chromate  
per Sherex SFS-01-001, SC2

Zinc Plated-Clear Trivalent Chromate  
per Sherex SFS-01-001

### Part Number

Example: CPN2-2520-280

CPN

Product Style

Slotted Body

Straight Shank

2

2-Steel

3-Aluminum

2520

Thread Size

280

Grip Range

( )

Empty-Open End

T-Clear Trivalent

W-Wedge Head

*Special finish or material available upon request*

Grip range can be affected by parent material and hole size.  
Sherex recommends trials installations to determine the proper grip range for the application.  
Contact Sherex for details.  
Contact Sherex for test data.

CPN Series must be installed with spin pull tooling.  
For more information see pages 41-45.

Sherex rivet nuts are compatible with the following hardware:  
**GRADE 2, GRADE 5, CLASS 8.8 and CLASS 9.8**  
Please contact Sherex when using other grade fasteners.