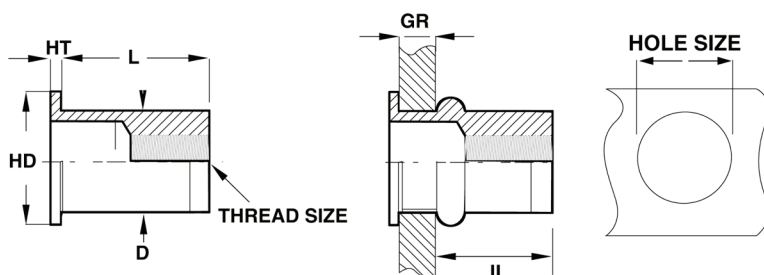


LARGE SIZE RIVET NUT SERIES SPECIFICATIONS

**LARGE
SIZE
SERIES**

Round Body



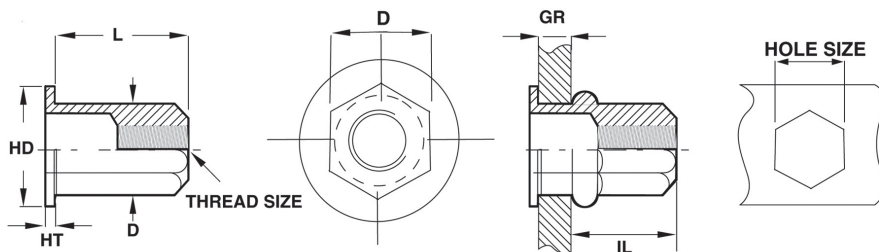
LRGR SERIES - ROUND BODY UNIFIED THREAD (UNIT - INCHES)

Part Number Inch - Steel	Thread Size	Grip Range		L	HD	HT	D	IL	Hole Size
		Min.	Max.	± .015	± .025	± .004	Max.	Ref.	+ .010/- .000
LRGR2-5013-177	1/2-13 UNC	.050	.150	1.260	.945	.085	.656	.984	.656
LRGR2-6211-200	5/8-11 UNC	.080	.200	1.428	1.181	.098	.826	1.142	.827
LRGR2-7510-250	3/4-10 UNC	.048	.250	1.210	1.235	.118	.906	.878	.907

LRGR SERIES - ROUND BODY METRIC THREAD (UNIT - MILLIMETERS)

Part Number Metric - Steel	Thread Size	Grip Range		L	HD	HT	D	IL	Hole Size
		Min.	Max.	± .38	± .64	± .10	Max.	Ref.	+ .25/- .000
LRGR2-12175-3.8	M12x1.75 ISO	1.27	3.80	32.00	24.00	2.16	16.65	25.00	16.66
LRGR2-1620-5.0	M16x2.0 ISO	2.00	5.00	36.27	30.00	2.50	20.98	29.00	21.00

Full Hex Body



LRGH SERIES - FULL HEX BODY UNIFIED THREAD (UNIT - INCHES)

Part Number Inch - Steel	Thread Size	Grip Range		L	HD	HT	D (A/F)	IL	Hole Size (A/F)
		Min.	Max.	± .015	± .025	± .004	Max.	Ref.	+ .010/- .000
LRGH2-5013-177	1/2-13 UNC	.040	.177	1.181	.959	.085	.656	.866	.656
LRGH2-6211-200	5/8-11 UNC	.080	.200	1.260	1.260	.118	.826	.965	.827

LRGH SERIES - FULL HEX METRIC THREAD (UNIT - MILLIMETERS)

Part Number Metric - Steel	Thread Size	Grip Range		L	HD	HT	D (A/F)	IL	Hole Size (A/F)
		Min.	Max.	± .38	± .64	± .10	Max.	Ref.	+ .25/- .000
LRGH2-12175-4.5	M12x1.75 ISO	1.00	4.50	30.00	24.36	2.16	16.65	22.00	16.66
LRGH2-1620-5.0	M16x2.0 ISO	2.00	5.00	32.00	32.00	3.00	20.98	24.50	21.00

Material: Steel 108/1010

ROHS Compliant Finishes: Zinc plated – clear trivalent chromate per Sherex SFS-01-001

Sherex full hex rivet nuts are compatible with the following hardware:

GRADE 2, GRADE 5, CLASS 8.8 and CLASS 9.8

Please contact Sherex when using other grade fasteners.

*Mechanical lock feature is available on all Full Hex parts.

Please contact Sherex for details.